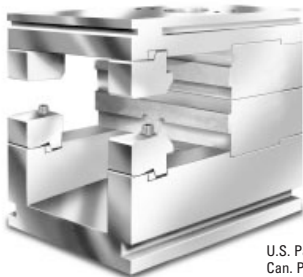
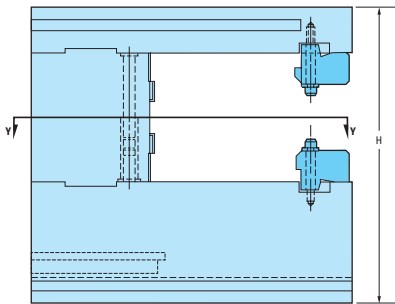
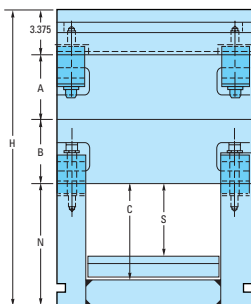
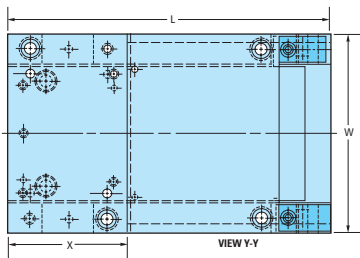


Single Heavy-Duty Unit Die Holders

For Zinc and Aluminum Die Casting



U.S. Pat. No. 2956321
Can. Pat. No. 620895



DCS-1215 AND DCS-1518 HEAVY-DUTY SINGLE UNIT DIE HOLDERS

CENTER SECTION

No. 5 Steel (H-13 type), heat treated to 42-46 Rockwell C

TOP CLAMPING PLATE AND EJECTOR HOUSING

No. 2 Steel (AISI 4130 type), pre-heat treated to 269-321 Bhn

FOR ZINC

Spreader and Bushing specified will be installed. Cost of Spreader, Bushing and installation included in List Prices.

FOR ALUMINUM

Straight shot sleeve hole bored to your specifications included in List Prices. (Please supply a dimensioned drawing.)

ITEM NUMBER	W	L	H	N	C	S	X	A	B	NET WEIGHT	REPLACEMENT UNIT SIZE
DCS-1215-A-HD DCS-1215-Z-HD	14.875	25.000	22.250	9.125	7.250	2.5625	9.125	4.875	4.875	1442	11.875 x 14.875
DCS-1518-A-HD DCS-1518-Z-HD	17.875	28.500	24.625	9.500	7.625	2.8125	9.125	5.875	5.875	2399	14.875 x 17.875

ITEM NUMBERS SHOWN ARE FOR UNIT HOLDERS ONLY AND DO NOT INCLUDE THE REPLACEMENT UNITS. SEE PAGE 18. FOR OTHER REPLACEMENT PARTS, SEE PAGE 19.

WHEN ORDERING FROM PAGES 15-16, PLEASE SPECIFY:

- Quantity and Item Number
- Bushing and Spreader Item Numbers (for Zinc) See pages 20-28
- Shot-Sleeve Diameter and Location (for Aluminum)
- Method of Shipment